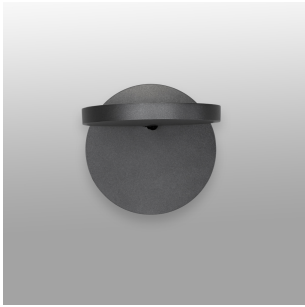


# Demetra wall spot w/o switch 2700K anthracite grey

## SPECIFICATIONS

1731W18A



### Design By

Naoto Fukasawa

### Collection

Design



### Specifications

Delivered lumens	472lm
Light output ratio	45lm/W
Power consumption	10.6W
Led type	9.5W Array*
CCT (Correlated Color Temperature)	2700K
CRI (Color Rendering Index)	>90
Life expectancy	50000Hrs
Control type	On/Off / Without Switch
Input Voltage	120V
Driver	TCl - 1 x DC-12W-550MA-AR

### Colors & Finishes

■ Anthracite grey

### Materials

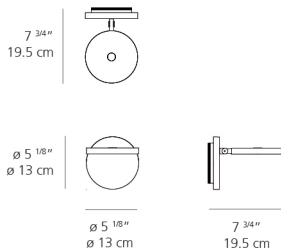
- Head in painted aluminum
- Lower head diffuser in thermoplastic
- Wall bracket in aluminum

\*Integrated light source

### Features & Accessories

- Tilttable and rotatable head

### Dimensions



### Packaging

1 Box

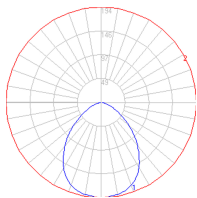
1 x 11-1/8" x 9-1/8" x 7-15/16" / 2.65 lbs - 28 cm x 23 cm x 20 cm / 1.2 kg

### Light distribution

Direct

### Luminaire weight

.99 lbs / .45 kg



### Warranty

5 year limited warranty

Red = Max Cd. Through Vertical plane

Blue = Max Cd. Through Horizontal plane